

The background of the entire image is a solid dark red color. Overlaid on this background is a large, stylized, light red letter 'S'. The 'S' is composed of thick, rounded lines and is positioned diagonally, starting from the top left and extending towards the bottom right. The word 'SIERRA' is written in a bold, white, sans-serif font, with a registered trademark symbol (®) to its upper right. Below 'SIERRA', the word 'MANUFACTURING' is written in a smaller, white, sans-serif font.

SIERRA®
MANUFACTURING



SIERRA®
MANUFACTURING
INSERTS MADE TO PERFORM

SIERRA MANUFACTURING INC. Company Profile

SIERRA

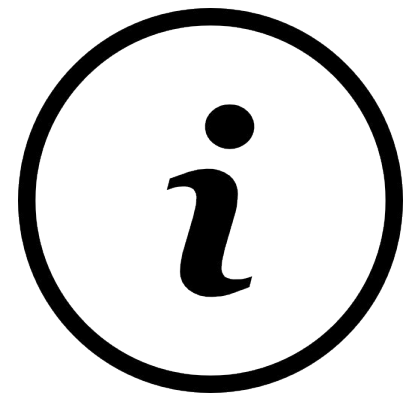
About us



SIERRA®
MANUFACTURING



About us



Sierra Manufacturing is a private, Mexican and family company, which has been in operation since 1995 in San Luis Potosí, Mexico. Our key market is the production of special cutting tools, as well as their resharpener and remanufacturing; providing solutions to the global market, delivering cutting tools of the highest quality, on time and with highly competitive prices.

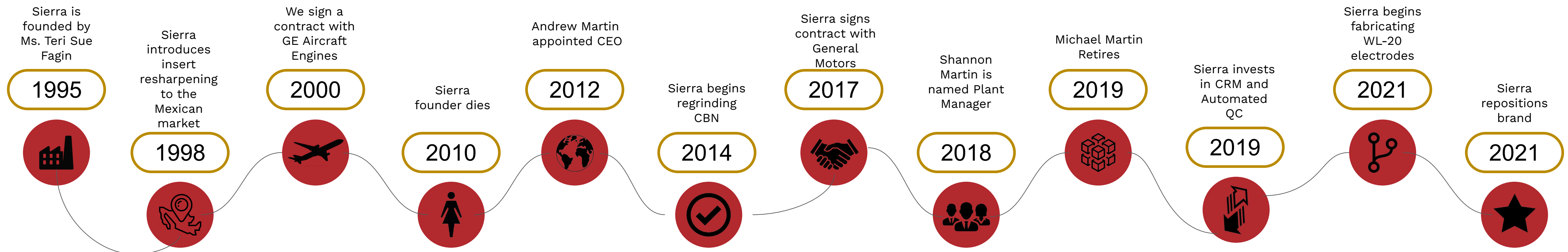
Our key competence lies in the manufacture of special indexable inserts, and the sharpening and remanufacturing thereof, for the largest OEM and Tier 1 manufacturers and suppliers in Mexico.

History of the company

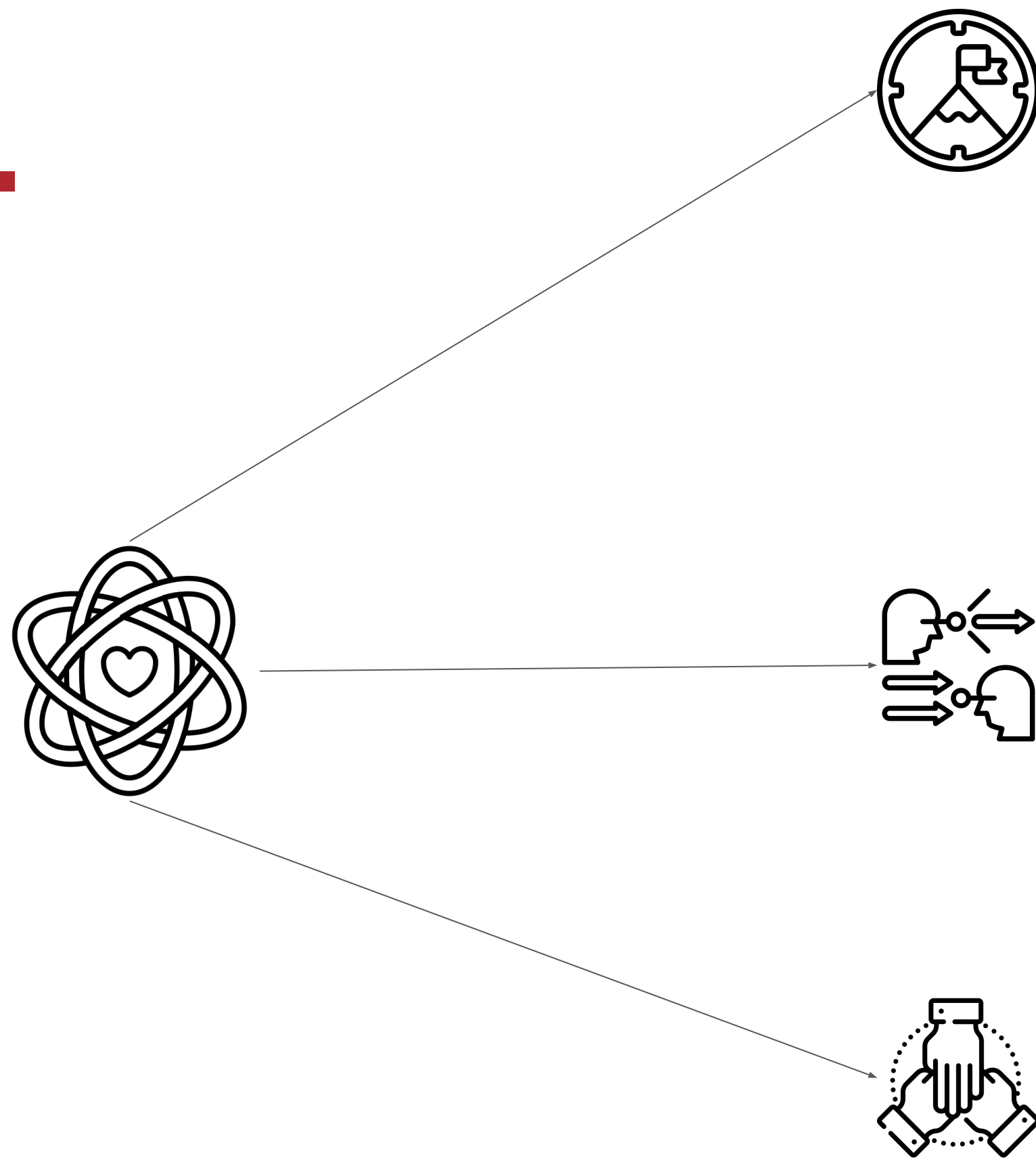


The idea for Sierra Manufacturing arose from the vision of fusing the best practices of the United States with the passion and dedication of an emerging power in the automotive industry in Mexico. In this way, a leader in the manufacture of indexable inserts was created. In 1995, this dream became a reality when it was co-founded by Teri Sue Fagin and Michael Worth Martin, as a strategic response to the NAFTA trade agreement.

Today, the company is owned by his son, Mr. Andrew Michael Martin, who brings his experience in international business and technology, positioning the company for a future focused on manufacturing 4.0. With a legacy rooted in innovation and a focus on excellence, Sierra Manufacturing stands as a pioneer in the industry, committed to leading the way toward 21st century manufacturing.



Mission, vision and values



Mission

Create shared prosperity, growth, and value for its employees and customers through manufacturing excellence, continuous innovation, attention to detail, and customer focus.

Vision

To be the preeminent, high-tech and most productive manufacturer and distributor of specialized indexable cutting tools in Mexico.

Values

1. Shared Prosperity
2. Mutual Respect
3. Excellence
4. Teamwork
5. Independence

Corporate Philosophy



Logic mixed with **passion.**

Inserts made to perform®



Corporate Philosophy




Create shared prosperity, growth, and value for its employees and customers through manufacturing excellence, continuous innovation, attention to detail, and customer focus.



Logic mixed with passion.

Sierra is agile, efficient, effective and at the forefront, with a focus on anticipating the needs of its clients, which is why it is the sum of logic, precision, passion and dedication that results in excellence. Prosperity is shared where the important thing is to achieve growth and value for clients and collaborators.

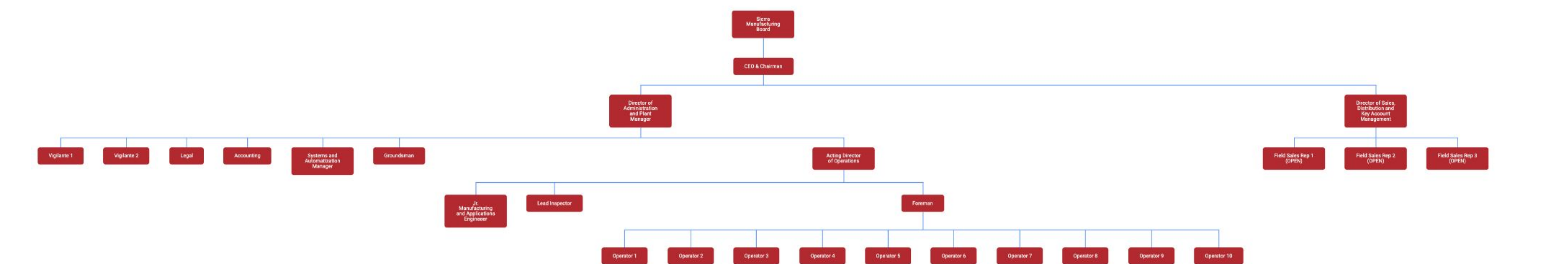
Sierra Group of Companies

Sierra Manufacturing	Sierra ToolTech	Cielibre
		
The manufacturing arm of the Sierra group of companies.	The resale and distribution arm of the Sierra group of companies.	The financing, rental and investment arm of the Sierra group of companies.
<ul style="list-style-type: none">- Special tools- Resharpened- Remanufactured- Cutting Tool Consulting Services	<ul style="list-style-type: none">- Standard inserts- Tungsten Carbide MP, Bars and STB- Abrasives- Spare parts	<ul style="list-style-type: none">- Machinery- Real estate- Rent- Software

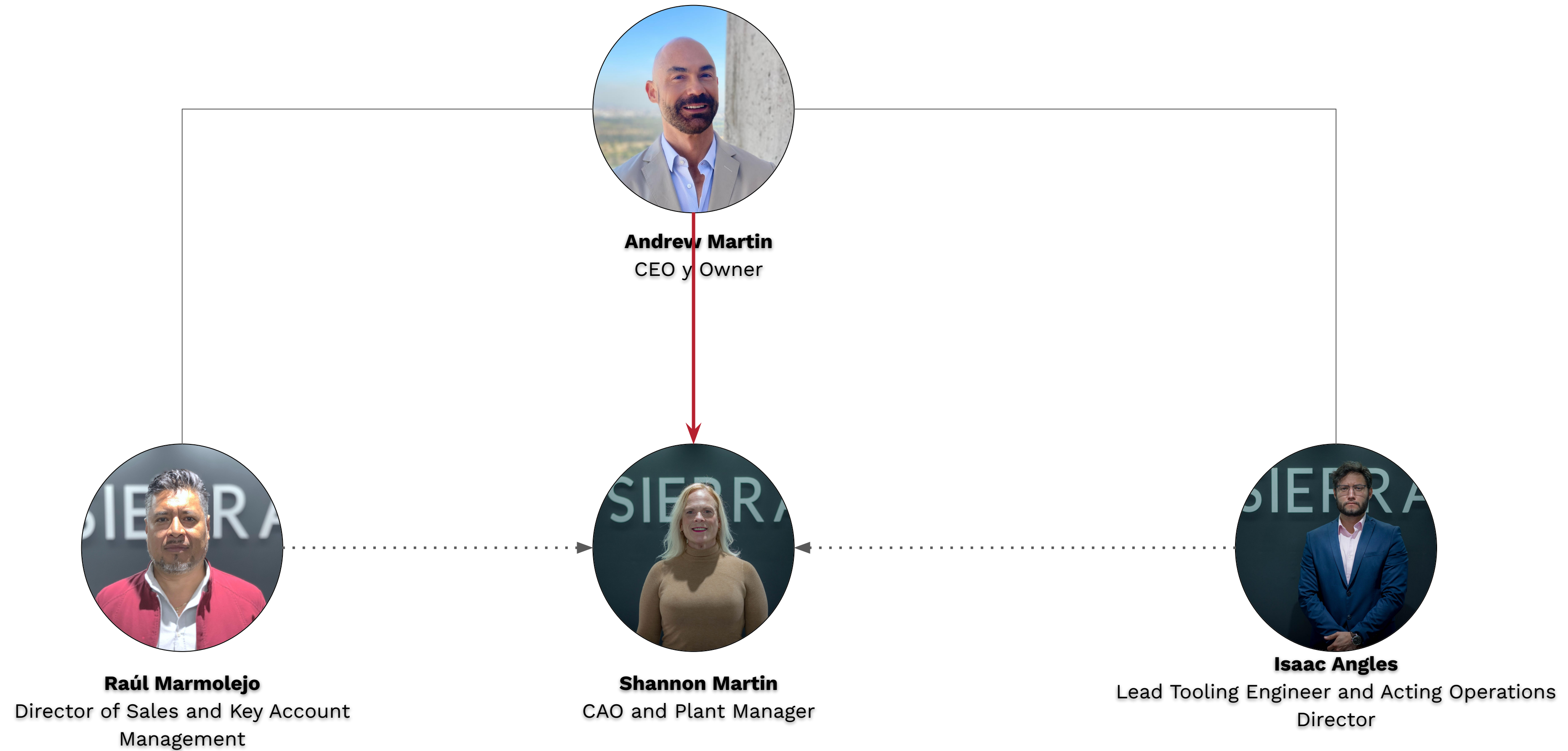
Corporate Organization Chart

At Sierra Manufacturing, our organization is characterized by its relentless focus on delivering excellence to our customers and creating a work environment where all individuals and their families thrive. Each of our collaborators shares the commitment to exceeding our customers' expectations at every step of our manufacturing process.

Our directors play a fundamental role in this pursuit of excellence. Each of them is assigned specific key performance indicators (KPIs) and operational metrics that are meticulously managed. This attention to detail and constant monitoring of our performance ensures that we are on track to achieve our goals and provide the highest quality products to our customers.



Executive Organization



Operational Organization



Melchor Pablo Gil Martínez
Jr. Manufacturing and Applications
Engineer



José Guadalupe Hernández Rocha
Operations



Israel Hernández Rocha
Operations



Miguel Ángel Medina Carrizales
Operations



Daniel Contreras Muñoz
Accounting and Finance Manager



Juan Everardo Facundo Hernández
Operations



Leonardo Daniel Palomo Hernández
Operations



Andrés Santos Ríos
Operations



Jeremy Peña
Operations



Juan Raymundo Rodríguez Alméndarez
Operations



Alberto Aguilar
Systems and Automatization Manager



Mario Sánchez Partido
Operations



Cristhian Josué Ponce Castillo
Operations

Our Clients

Sierra Manufacturing provides cutting tool solutions to some of the industry's top leaders, spanning crucial sectors such as automotive, aerospace, power generation, mining and many others. Our products and services drive excellence and performance in these cutting-edge industries, allowing our clients to stand out in a competitive market and maintain their position as leaders in their respective fields.



Logic mixed with **passion.**

SIERRA

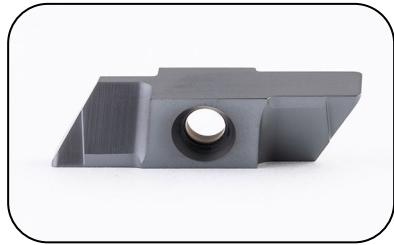
Products and Services

SIERRA®
MANUFACTURING

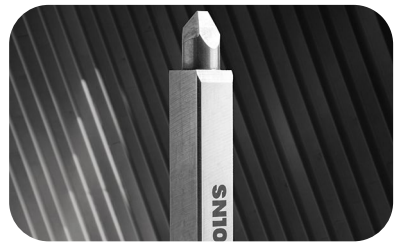


Our Products and Industries

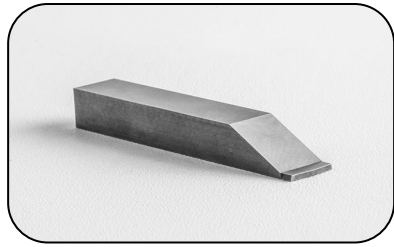
Products



Inserts



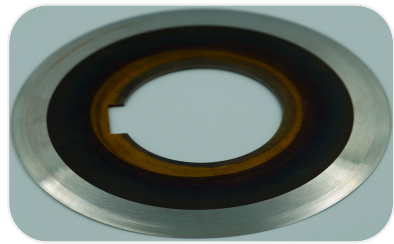
Electrodes



Deburrs

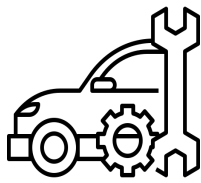


Rhymes

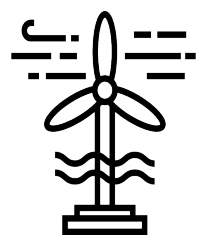


Blades

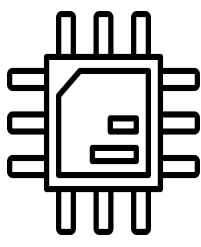
Industries



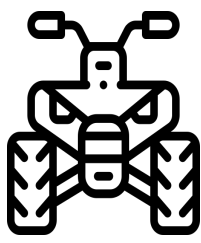
Automotive



Electricity Generation



electronics



Recreation Vehicles



Heavy Machines

Products



Our services

Remanufacturing - We make it possible to reduce costs for tool acquisition and indirect costs through the remanufacturing of indexable inserts.



Resharpening - we facilitate the reuse of inserts through resharpening, preserving original details and even optimizing their operation to achieve greater efficiency in production lines.



SIERRA

Delivering
Unmatched
Value



SIERRA®
MANUFACTURING



Excellence and Savings

Sierra Manufacturing is unmatched in delivering value to customers, thanks to our competitive advantages. Our excellence is reflected in 0 complaints in 2 years, an internal waste rate of less than 3% and a machine uptime of 95%. Our extensive experience of almost 30 years in San Luis Potosí translates into a 0% operator turnover in 2 years. Additionally, we achieved an 83% success rate in testing and an average CPU savings of 45%.

These achievements demonstrate why Sierra Manufacturing is a leader in providing exceptional value to our customers.



Sample Savings Calculator

Monthly customer spending	Year 1 Savings	Year 2 Savings	Year 3 Savings	Year 4 Savings	Year 5 Savings
\$2,500	\$3,262.50	\$6,525	\$9,787.50	\$13,050	\$16,312.50
\$5,000	\$6,525	\$13,050	\$19,575	\$26,100	\$32,625
\$10,000	\$13,050	\$26,100	\$39,150	\$52,200	\$65,250
\$15,000	\$19,575	\$39,150	\$58,725	\$78,300	\$97,875
\$20,000	\$26,100	\$52,200	\$78,300	\$104,400	\$130,500
\$25,000	\$32,625	\$65,250	\$97,875	\$130,500	\$163,125

Assumptions

Cutting tool tests work 83% of the time

Cutting tool testing results in 45% unit cost reduction

The client's monthly spending remains constant for 5 years

⚠ Savings are calculated by multiplying the customer's monthly spend by the percentage of cutting tool tests that work times the percentage cost reduction per unit. Please note that these are estimates only and actual savings may vary depending on a number of factors, such as the specific cutting tools used, the type of products being manufactured, and the customer's overall production process.





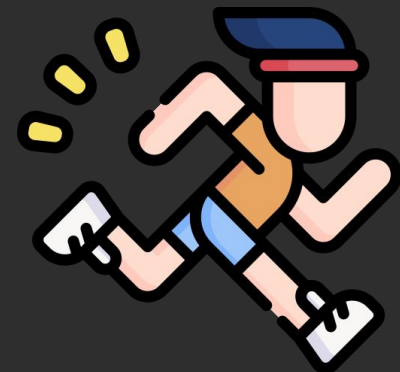
Savings by improving performance

 **30%**



Savings through regrinding

 **fifty%**



Speed to market

 **60%**



Assured quality

Success Stories

CASO DE ÉXITO



**BIG 3
AUTOMAKER**

HERRAMIENTA



AHORRO ANUAL

\$120,000.00 USD

AUMENTO DE
VIDA ÚTIL

↑ 25%

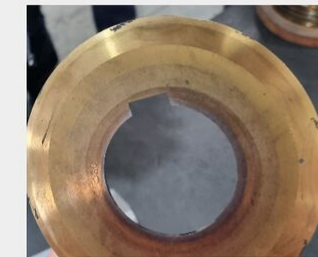


**¡Ya afilamos
Cuchillas HSS!**

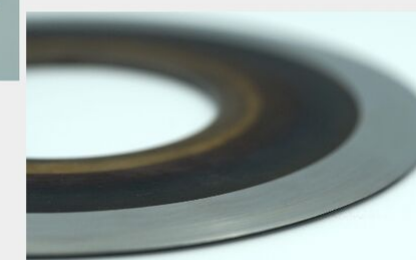
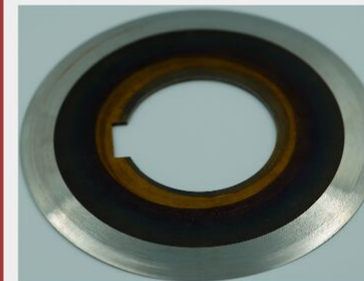
**CUSTOM AUTOMOTIVE
TOOLING**

HERRAMIENTA:

Antes (sin afilar)



Después (afilada)



CASE STUDY



CLIENTE:

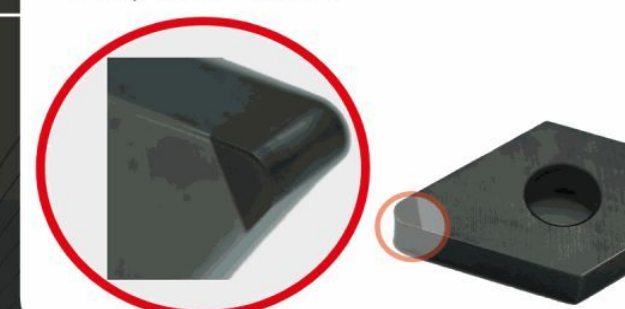
Líder Global de motores Tier 1.

HERRAMIENTA:

Antes : Usado.



Después : Afilado.



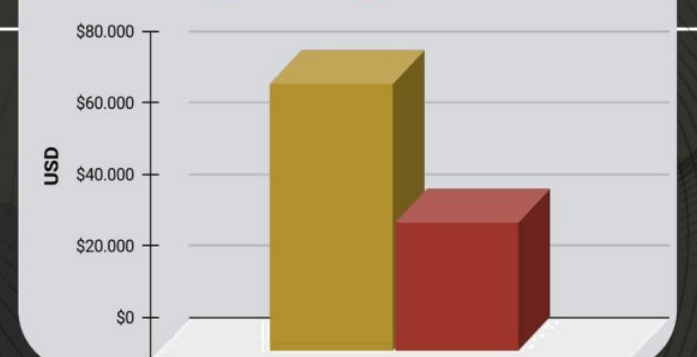
AFILADO CBN

40,000 USD

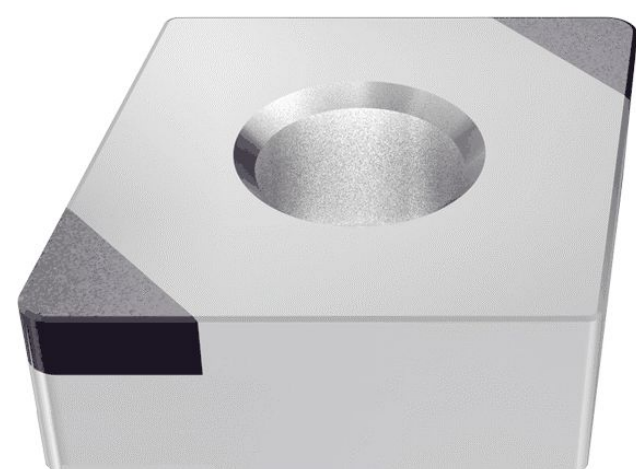
Ahorro ANUAL

Costo Anual

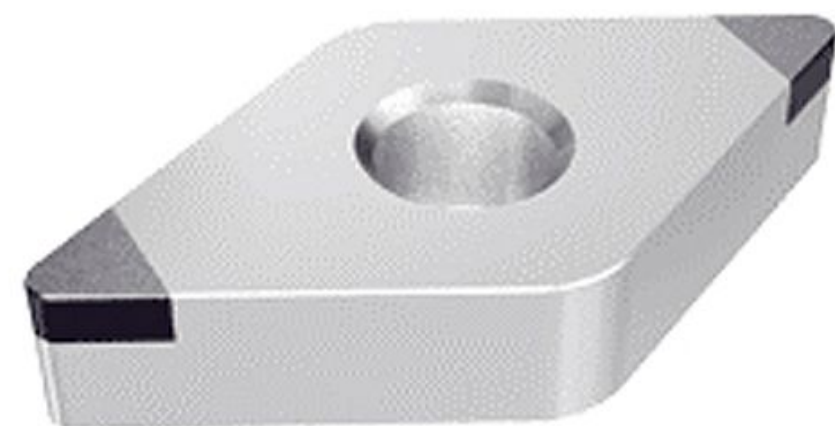
■ Cliente ■ Sierra



Success Stories



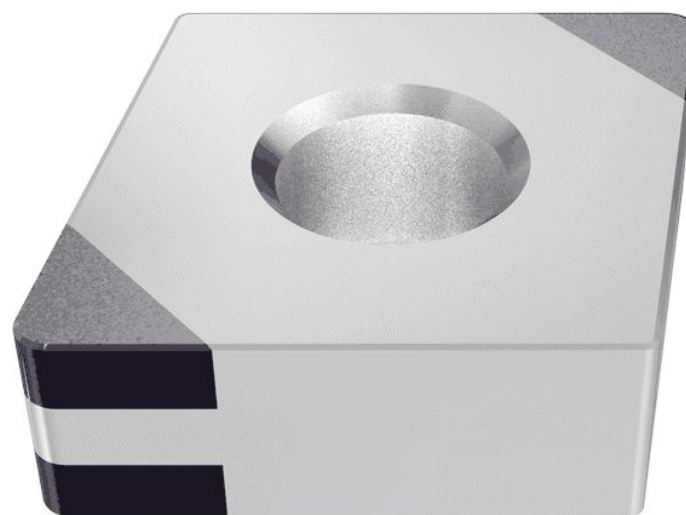
CNGA 432
2 TIPS



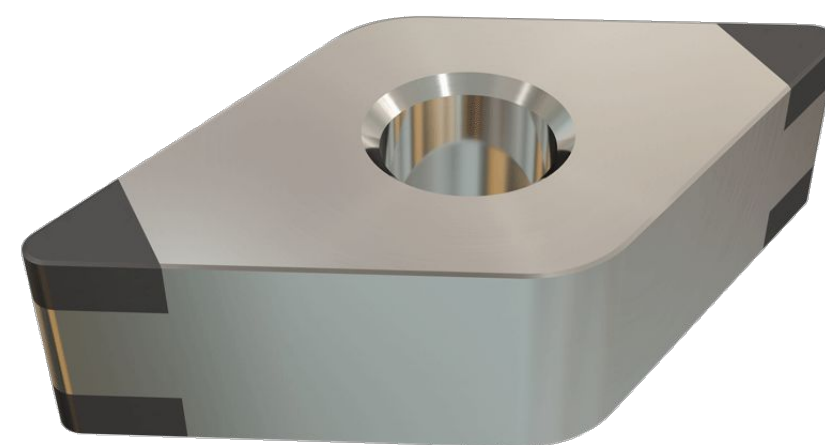
DNGA 432
2 TIPS



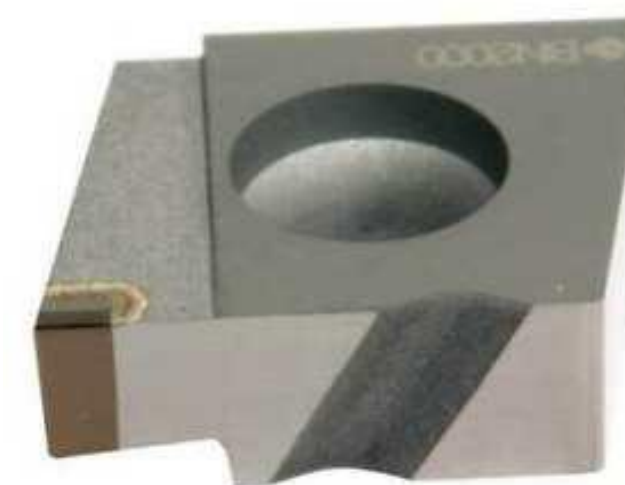
CCGW09T
2 TIPS



CNGA 432
4 TIPS



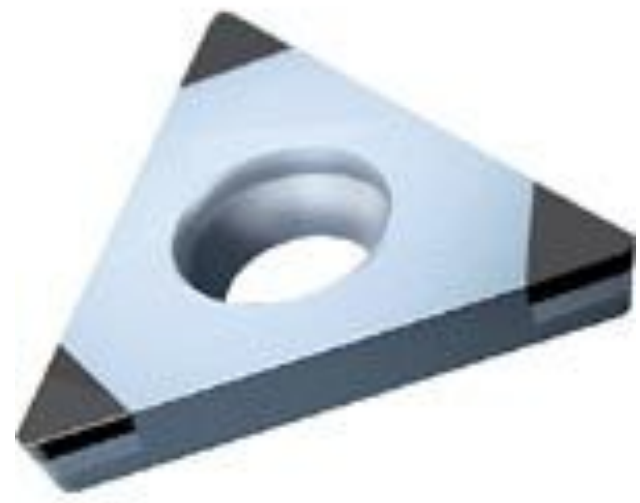
DNGA 432
4 TIPS



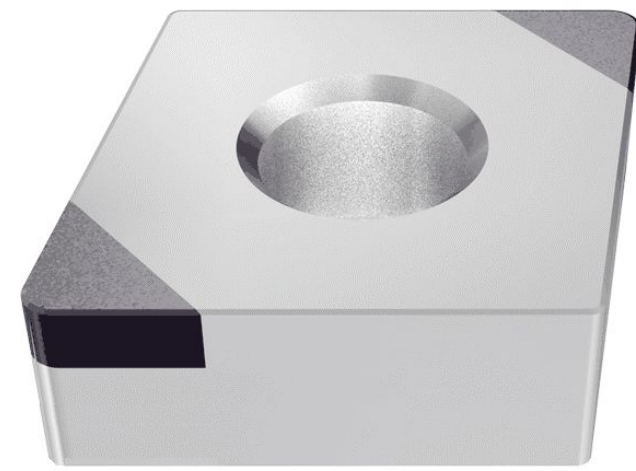
CGAR
SLOT



Success Stories



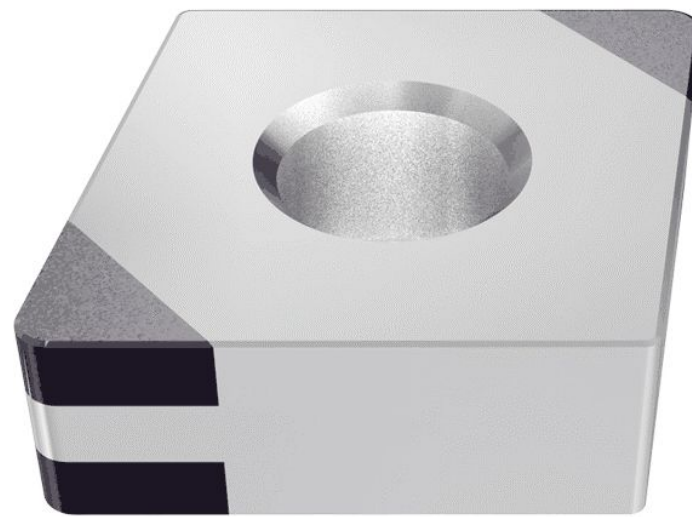
TCGW
3 TIPS



CNGA 435
2 TIPS



CCGW09T
COMPLETE
TIP



CNGA 435
4 TIPS



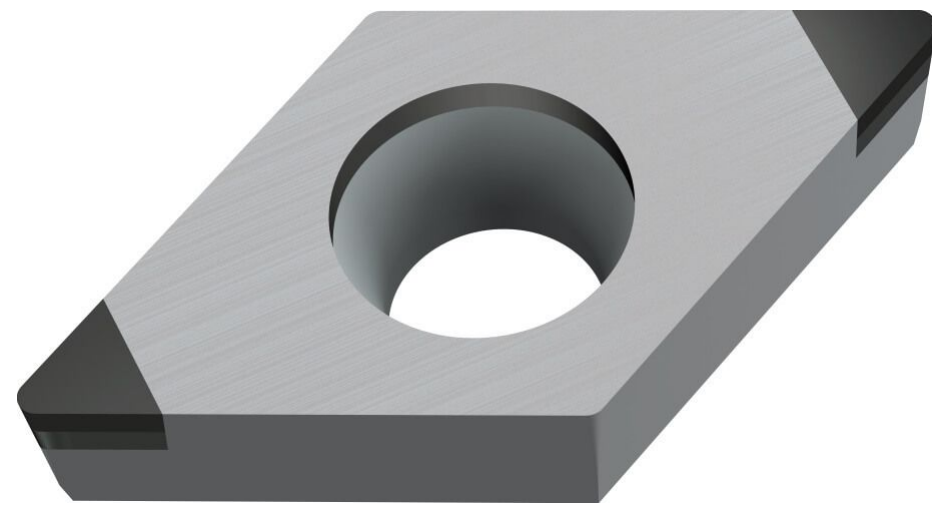
SNM 322
8 TIPS



XW99
CBN



Success Stories



DCGW 2 TIPS
REMANUFACTURED



DCGW 1 TIP
REMANUFACTURED

NG-3L CBN 2 TIPS
REMANUFACTURED



CCGW CBN 2 TIPS
REMANUFACTURED



Success stories



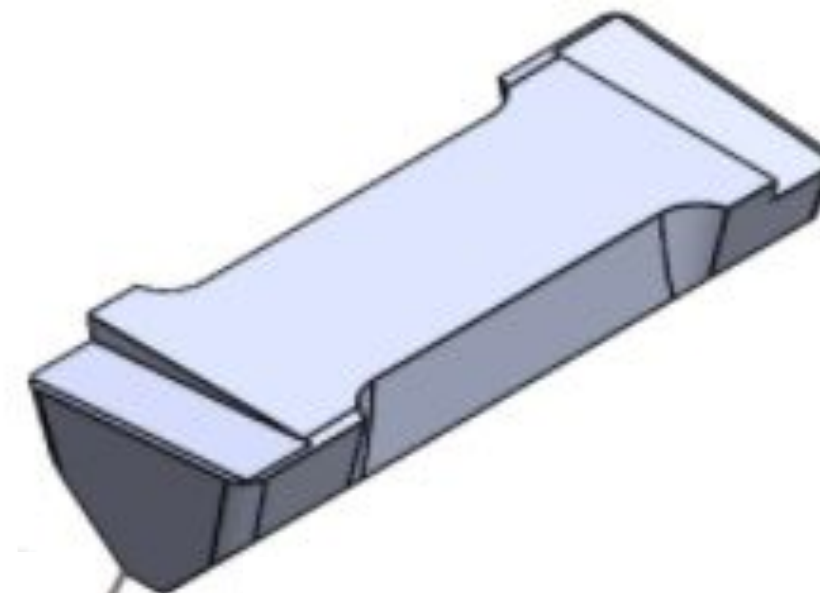
2/806

LXHX CARBURO
AFILADO Y NUEVO



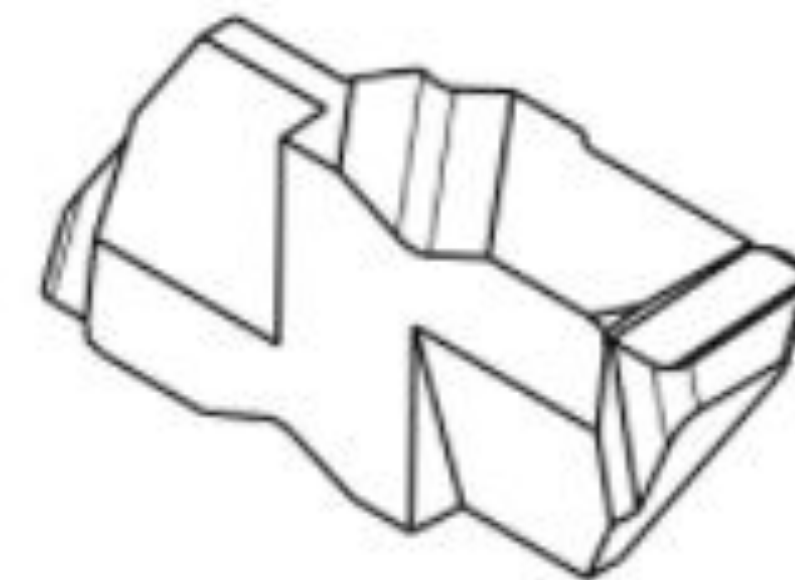
177

DOGBONE

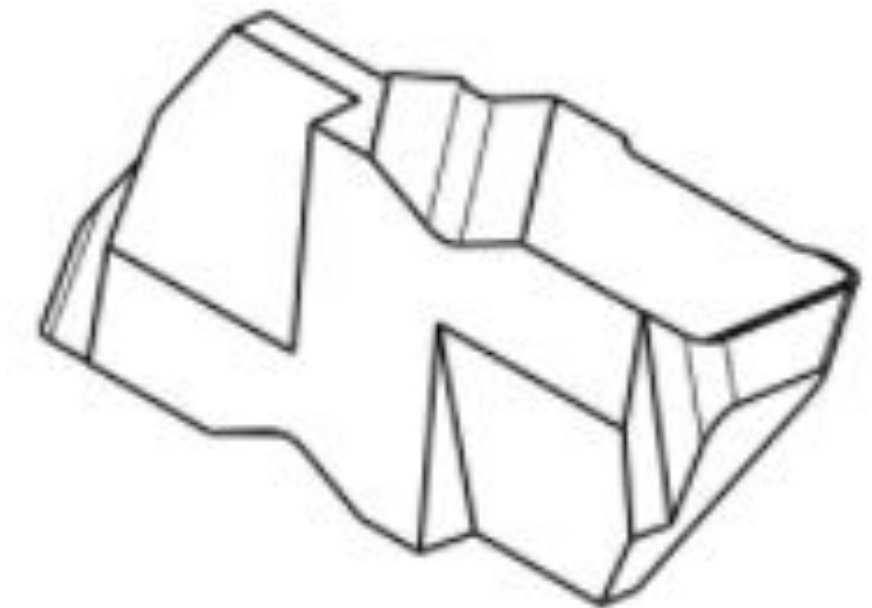


203 /807

TOP NOTCH
CARBURO
AFILADO Y NUEVOS



828

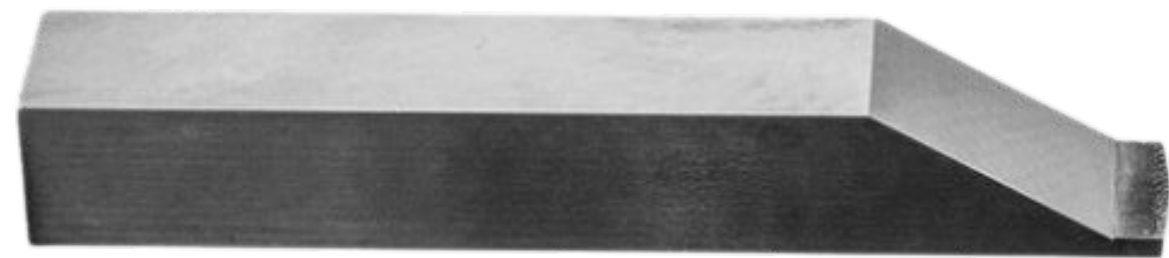


827



KC

Success stories



DEBURBER



SPECIAL INSERTS



ELECTRODES

SIERRA

Operational Excellence

SIERRA®
MANUFACTURING





Our focus on operational excellence and commitment to innovation allows us to maintain high standards. Additionally, each member of our team brings years of experience and an unwavering commitment to excellence to every project we tackle.

◀

[PGMSLP-PT0000599] LXHX 3807 XF 2936.202 Insert PT30A14806:

100.000

/100.000 Units

Lot Number:

0000013

▶
↗

WH/MO/00124-Square - RO/00002-B

☰

Pause

◀ Previous

Skip ▶

⌚
00:08

VALIDATE

PRINT DIMENSION/SPECIFICATIONS

1.1- 10" X 0" +/- 30"

Measure: 0.0000
deg

Control Document	Control ID
Product Code	PGMSLP-PT0000599
Blueprint No.	BP0000356
Routing No.	RO/00001-1
QCP No.	102/103

PRINT DIMENSION/SPECIFICATIONS

1.1- 10" X 0" +/- 30"

1.1-una medida de 0.480 +/- 0.001"

SQUARE

Forma de checar: Comparador optico, Micrómetro de 0" a 1"

Nota: Checar centro con micrómetro de Calvo.

SAVE DISCARD

Components	Work Orders	Miscellaneous							
Operation	Work Center	Scheduled Start Date	Expected Duration	Real Durati...	Status				
Planning - RO/00002	Planning	10/07/2021 08:47:12	500:00	00:13	Finished	Block	🔗		🗑
Blanchard - RO/00002-B	Blanchard	10/07/2021 08:47:30	182:42	01:19	Finished	Block	🔗		🗑
Square - RO/00002-B	Surface Grinder No. 01	10/07/2021 08:48:52	206:40	00:26	In Progress	Start	Block	🔗	📄 🗑
Rough - RO/00002-1B	Surface Grinder No. 03	10/07/2021 20:53:10	194:52	00:04	In Progress	Start	Block	🔗	📄 🗑

Modern and Spacious Floor Plan

At Sierra Manufacturing, we have a modern and spacious plant that allows us to expand our production capacity. We can manufacture thousands of inserts per month and offer direct shipments from our warehouse or direct deliveries to our customers, adapting to their needs efficiently.



Logic mixed with **passion.**

Measurement equipment

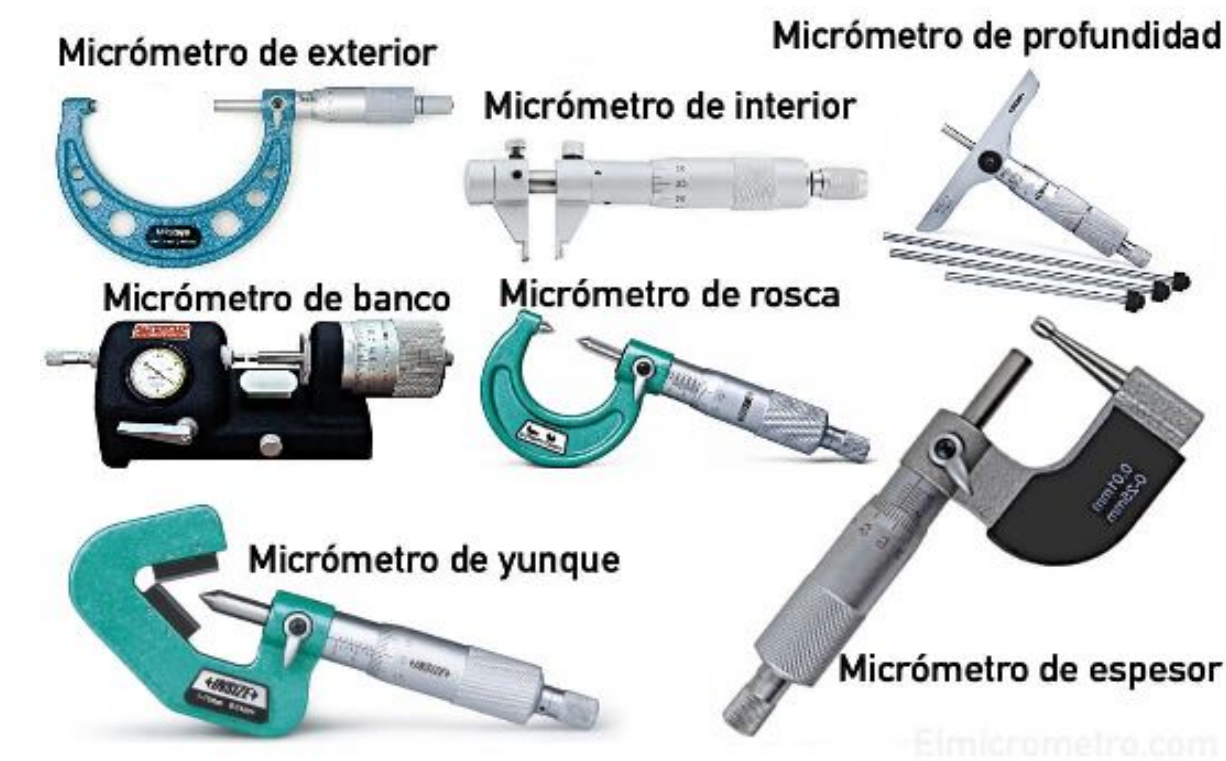
At Sierra Manufacturing, we have state-of-the-art measurement equipment, backed by systems and the experience of our employees, to consistently deliver products of exceptional quality. Our cutting-edge measurement capabilities ensure that each product meets the highest quality standards, setting us apart in the industry and providing peace of mind to our customers.



Comparadores Opticos



Keyence IM-700



Micrometros

The Sierra Warranty Promise



We guarantee that our tools will perform and reach the lifespan they are promised. If they fail to live up to this promise, we will come immediately to resolve the issue and compensate you financially. Guaranteed!






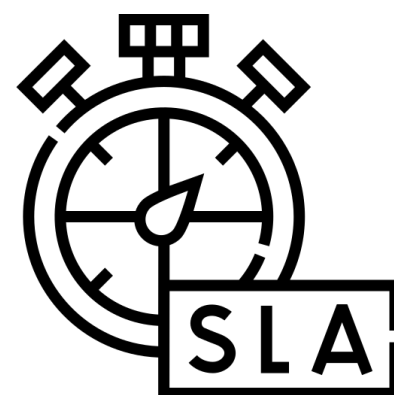
Available 24/7



Communication

In order to offer better service, we have established communication channels that are suitable for any need that our clients may have.

 +52 1 (444) 624 0006
 +52 (444) 824 1060
 customerservice@sierramfg.mx



- Commitment to our clients is our priority.
- Contact us through any of our communication channels and we will assist you within a period of no more than 2 hours.

Thank you!

SIERRA®
MANUFACTURING



+52 444-824-1060



sales@sierramfg.mx



sierramfg.mx



[sierramfg](https://www.linkedin.com/company/sierramfg)



[sierramfg](https://www.instagram.com/sierramfg)



Comisión Federal De Electricidad 625 Zona Industrial
San Luis Potosí, San Luis Potosí, México. CP. 78395